



- 5 x 40 mm dia straightening rolls
- Individual penetration adjustment of the 2 upper rolls with reading on a setting rule
- 1 pair of 40 mm dia inlet feeding rolls + 1 pair of outlet ones
- Lifting of the upper inlet roll and outlet one through a screw-nut device
- All rolls are case-hardened (60 Rck) and ground
- Lower straightening and feeding rolls motorised through a hardened cylindrical gear pair
- AC motor with frequency variator, speed data adjustable by potentiometer
- Loop control with dancer arm, automatic speed regulation by potentiometer and electric switches for stop mode and strip tension safety
- Inlet strip guide made up of 2 hardened rollers, manually adjustable
- 2 inlet horizontal sheet holding rolls + 2 outlet ones
- Base made of rolled, welded steel

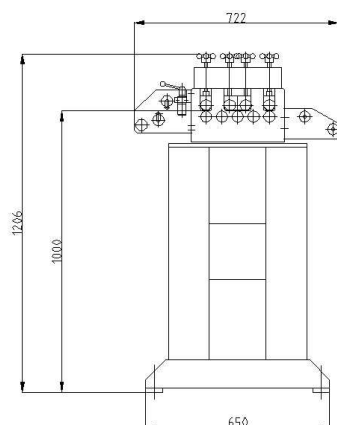
RANGE AND FEATURES

Model	Width (mm)	Thickness (mm)			Straightening rolls		Feeding rolls		Weight (kg)	Electrical power 400 V - 50 Hz (kVA)
		Min.	Max.	Max.*	Quantity	Ø (mm)	Quantity	Ø (mm)		
1645 A	130	0.2	3	2.6	5	40	4	40	170	2.2
1645 B	300	0.2	2.5	1.2	5	40	4	40	255	2.2
1645 D	500	0.2	2	0.9	5	40	4	40	285	2.2

Straightening capacities are given for a yield point $R_e = 210 \text{ Mpa}$ and a tensile strength $R_m = 350 \text{ Mpa}$.

* Max. thickness for max. width

DIMENSIONS



Model	K	L
1645 A	510	130
1645 B	510	300
1645 D	690	500

